



# AUCTION

LEADING THE INDUSTRY SINCE 1945

**TUESDAY – OCTOBER 3, 2017 – 5:30 PM**

## Attention Investors

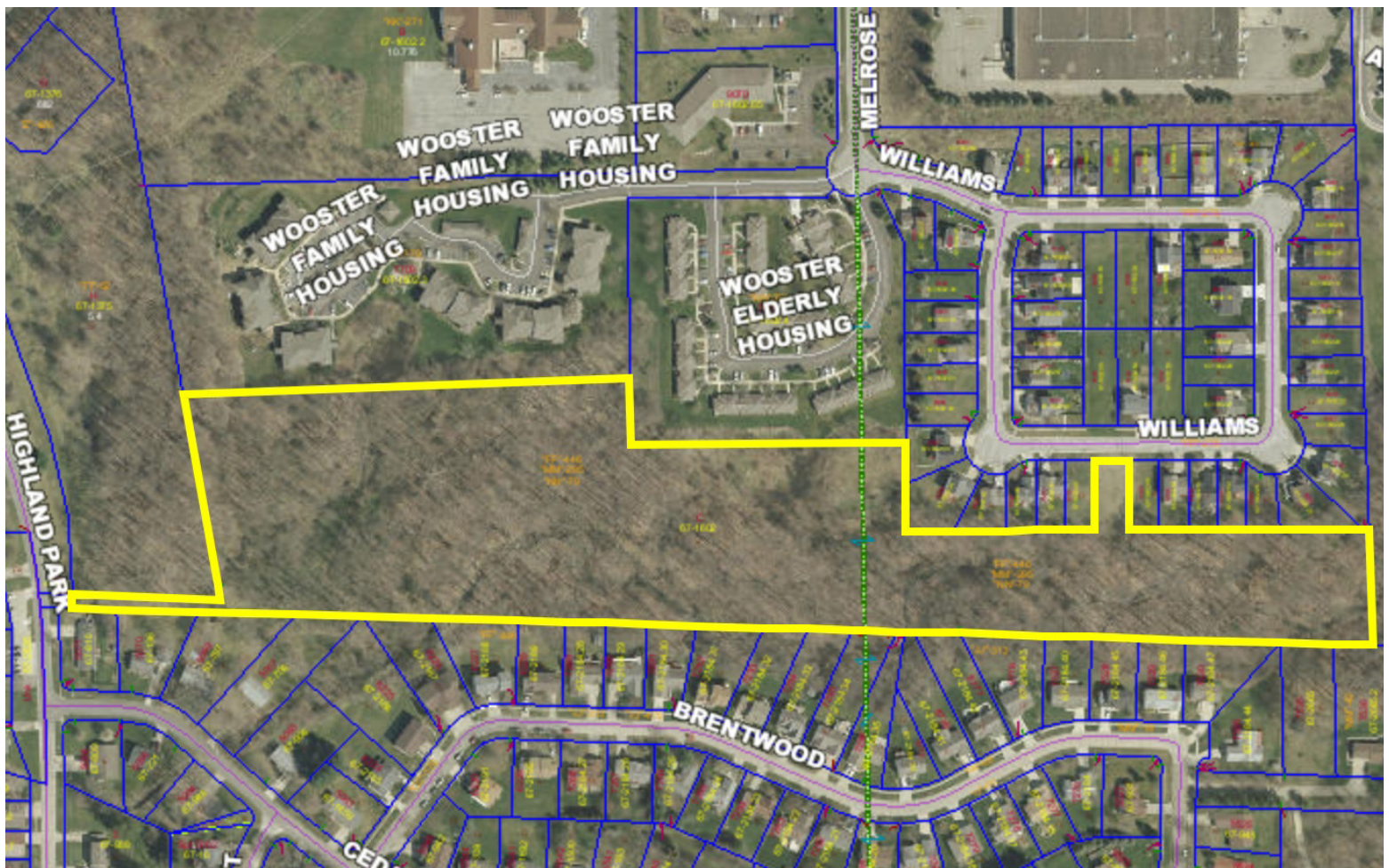
**14 ACRES – WOODED – ZONED SINGLE & MULTI-FAMILY**

Wayne Co. – Wooster City

**ABSOLUTE AUCTION, All sells to highest bidder on location:**

**PORTAGE RD., WOOSTER, OH 44691**

**Directions:** From OH 585 (Akron Rd.) and Portage Rd. head west on Portage to Melrose, then south on Melrose to Williams Way and follow to auction site. Watch for KIKO signs.



Information is believed to be accurate but not guaranteed.



**330.455.9357 • kikoauctions.com**

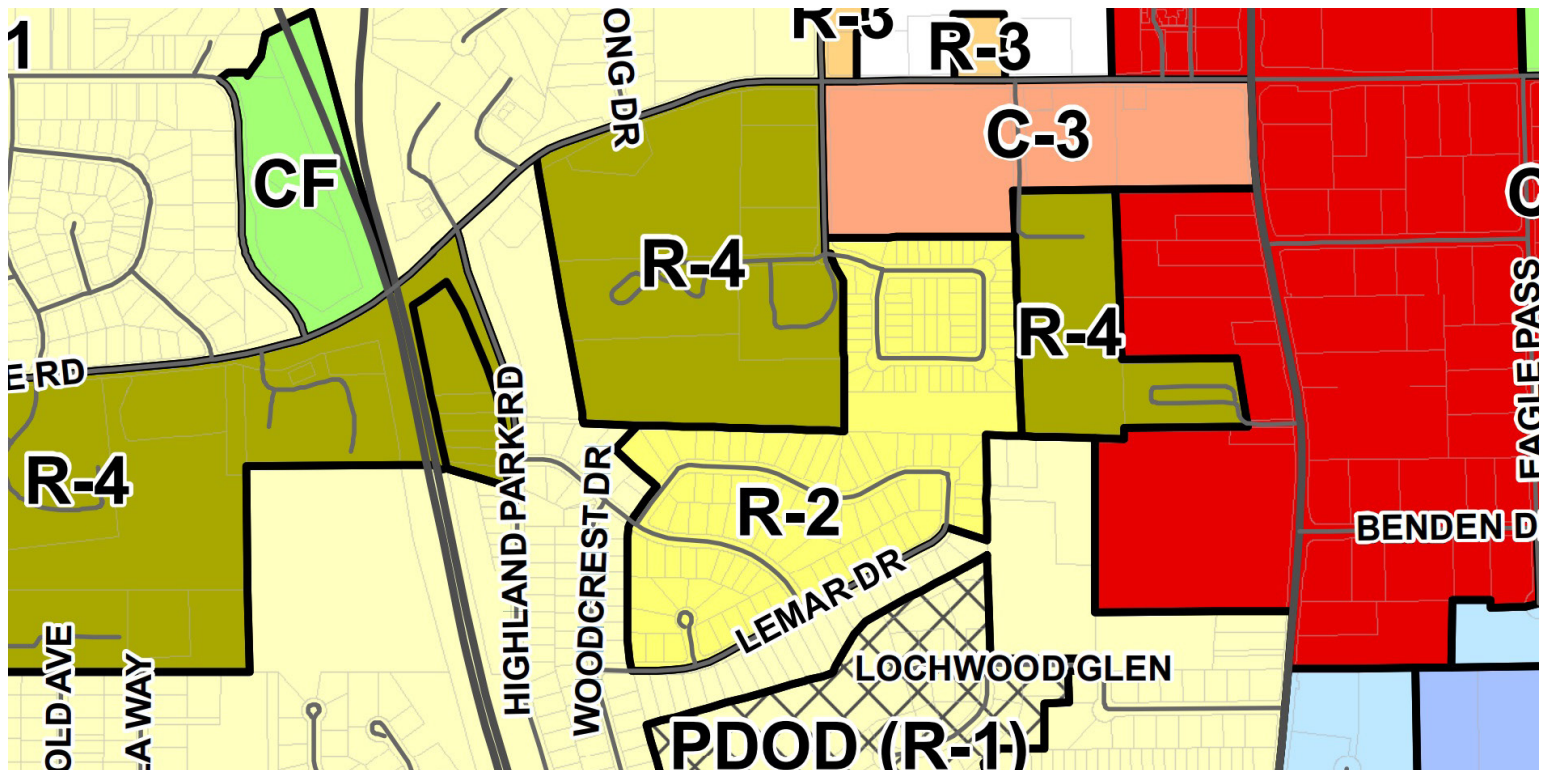


13.969 acres wooded land zoned R-2 (single family) and R-4 (multi-family). Wayne Co. Parcel #67-01602.000. Public utilities on Williams Way. Wooster City Schools. Timber potential.

**TERMS ON REAL ESTATE:** 20% down auction day, balance due at closing. A 10% buyer's premium will be added to the highest bid to establish the purchase price, which goes to the seller. Any desired inspections must be made prior to bidding. All information contained herein was derived from sources believed to be correct. Information is believed to be accurate but not guaranteed.

**AUCTION BY ORDER OF:** Testa Enterprises Inc.

**AUCTIONEER/REALTOR:** Brooks E. Ames, 330-703-2732 or brooks@kikocompany.com



**330.455.9357 • kikoauctions.com**

